

DECCA | CONTRACT



SKYWARD VISTA

Setting the Scene.

SKYWARD VISTA | BY ALYSSA COLETTI

Skyward Vista tables are an intersection of ascending lines, sweeping surfaces and negative space. The cascading contours of the monolithic base play on the relationship between the dynamic peaks and plunging valleys.









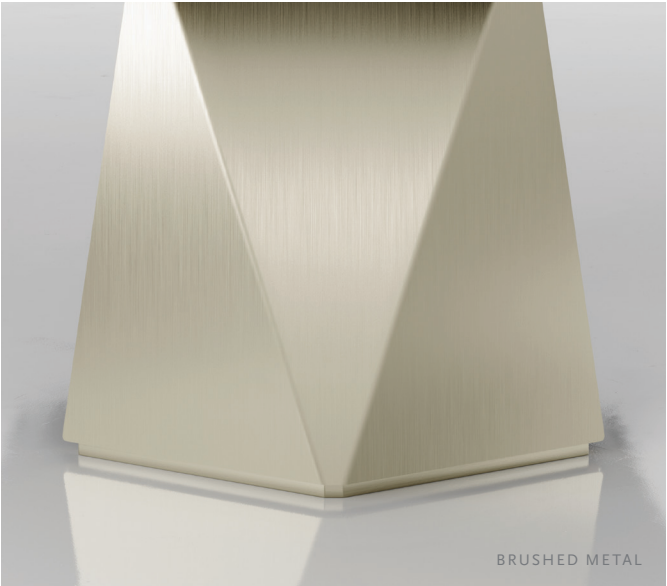
SKYWARD VISTA

A further evolution of the classic Skyward Table, Vista is ideal for board rooms and corporate meeting rooms, as well as the executive office or a private dining room. Material and finish choices allow for unique aesthetic solutions appropriate to the space and the spirit of the setting.

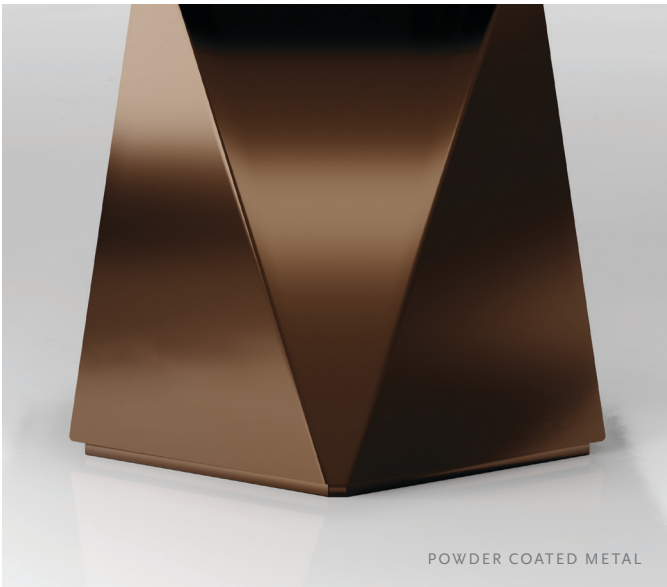
- Monolithic base can be specified in a diverse assortment of standard and premium veneer and metal finishes.
- Concealed drawers preserve purity of line while providing discreet wire management and access to power.
- LED lights beneath the tabletop illuminate and accent the geometry of the table bases.



veneer



brushed metal



powder coated metal



ABOUT ALYSSA COLETTI

Alyssa Coletti founded Nonfiction Creative as a multidisciplinary studio focused on the elements of concept, form and craft in contemporary furniture design. Alyssa holds a degree in industrial design from Purdue University, augmented by further studies in design and architecture in Denmark.